

Intro to Catalogue Creator

(Developers and Manufacturers)

Jack Brick
Configura

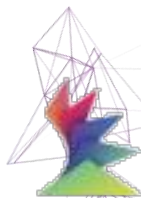


Catalogues Tool



Catalogue Browser

Browse thousands of products listing from various manufacturers, and use the 3d symbols for your space planning and design on the CET designer platform.



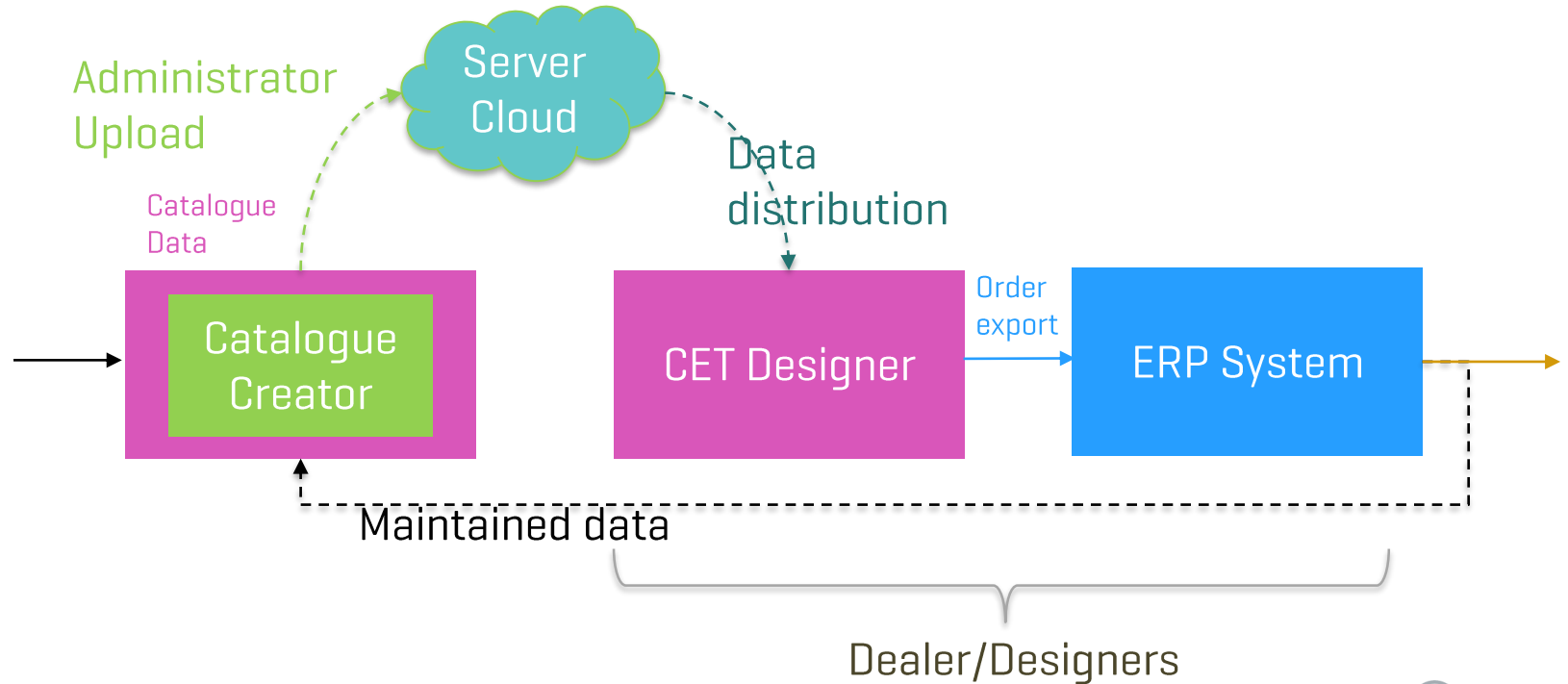
Catalogue Creator

UI and Tool to create, manage and publish your own catalogue in OFDA XML format and make available for users around the world at your fingertips.

PGC vs Catalogue

Parametric Graphical Configuration	Catalogue
Developers build & maintain database in CET Designer	Customer CAN self build & maintain database in CET Designer
Algorithm & Database driven	Data driven
Supports complexity and are flexible	Supports less complex products and are less flexible
Graphic drawn by developers & customer	Graphic prepared by customer

Moving to CET Designer Platform



Resources to make a Catalogue

What do you need?

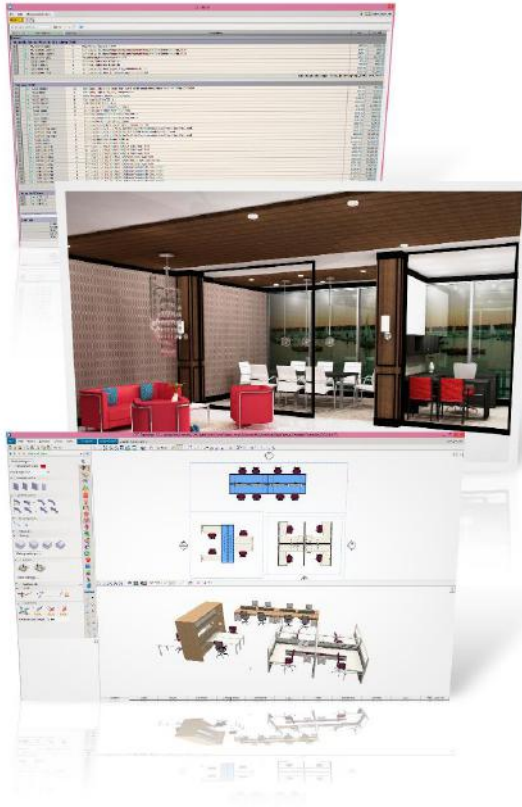
- Products
- Graphics



Product

What defines a Product

- Code
- Description
- Dimensions
- Feature and Option Codes
- Price List





Graphic

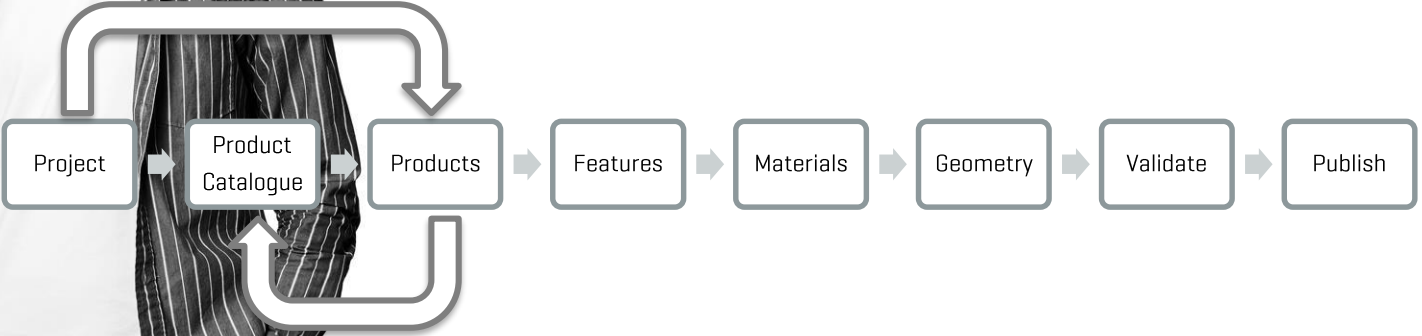
2D and 3D representation of a Product[s]

- Convertible Models: [dwg, 3ds, skp, obj, stl]
- Converted to cm3d/cmsym
- Don't forget material files! [png, jpg]



Creator Workflow

How do we get from one to done?



Creator Window

Creator

File Switch Tools Undo Redo < No Name > [] Jack Brick

Project Product Catalogues Products Features Materials Geometry Validation Data Import Utilities Publish

Enterprise / Manufacturer

Code *

Languages Select Project Languages

Shown Language < No Languages in Project >

Name *

Description

Units *

- Millimeters (mm)
- Centimeters (cm)
- Decimeters (dm)
- Meters (m)
- Inches (in)
- Feet (ft)

Price Lists

< None > + New Price List - Remove Price List

Code *

Lookup Code < None >

Description

Currency * USD

Currency Rounding * 2

Currency Preview: 12345.68

Exchange Rate / Multiplier * 1

Effective Date 2017 10 23

Expiration Date 2017 10 23

Vendors

Use Vendors

+ Create Vendor - Remove Vendor

Code

Name

Leadtime Programs

+ Create Program - Remove Program

Code Days

Description

Vendor

Categories

Top-Level Category #Accessories - Accessories

Sub-Level Category

+ Create Sub-Category - Remove Sub-Category

Code

Resource Directories

Symbols Directory *

Swatches Directory *

Previews Directory *

Set To Location

* Required fields are marked with an asterisk



Project

Who we are

- Company Information
- Supported Languages
- Supported Currencies [Pricelists]

Product Catalogues

What we offer

- Contains Products that are available for use/order
- Multiple Catalog support



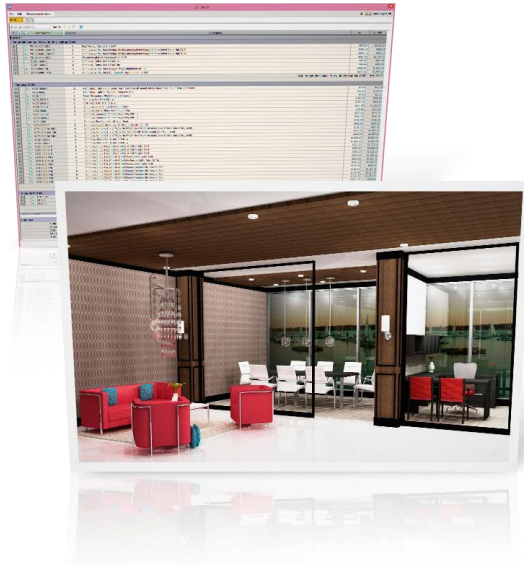


Products

What we have

- All products listed here
- Any extra details
- Searchable, filterable

Features



What characteristics our products hold

- Options represent chosen characteristic
- Size Change
- Color Change
- Upcharges, omitted on BOM



Materials

What colors we have available

- List of references for materials
- Custom image size
- Multiple file support for one material



Geometry

Where we establish the relationships

- Link Models to Products
- Link paintable layers to Features
- Link Materials to Options
- Preview Functionality



Validation

We need to verify it works

- Check against predetermined requirements
- If validations pass, they're good. If they provide warning or error, need to be checked and corrected.

Data Import

SIF Import and/or Project Merge

- SIF data can be imported and populate previous tabs here.
- Existing XML's or SIF data can be used to merge against open XML





Utilities

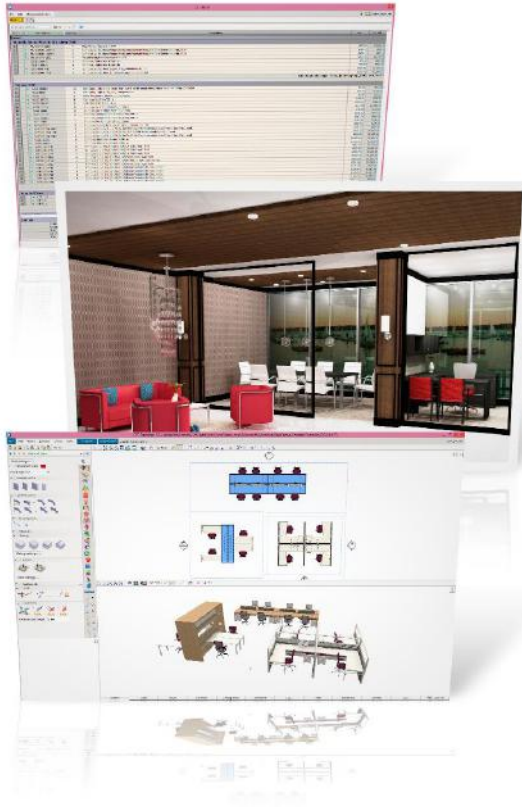
Preview Render & Match Resources

- Generate preview images of products
- Match Materials, Previews, Models to Product

Publish

We send the data out to be accessed by our users

- Create/Maintain/Delete Portfolios
- Control who has access to Portfolios
- Upload XML, Models, etc to Portfolios
- CET Designer auto downloads updates



How to Improve Overall Catalogue Efficiency?

- Plan what to do from the start.
- Use Level of Detail for symbols
- Same 0 point between symbols
- Sort symbols in respective directory
- Make layers and symbols name as clear as possible
- Resources local to machine over network to avoid network latency
- Understand product, understand how symbols work, and understand your ERP System



Questions?